



Distinctive Brick Facades

Insulating and designing with Caparol system solutions



Experience Quality.



Brick facades authentically simulated and refurbished for energy saving

For over thirty years, way up in the North, a product has been traditionally hand-crafted which lends a face to buildings – the **Meldorfer® Flachverblender**, flat facings. These facings open up a wide range of possibilities for building owners, architects, municipal refurbishers and architectural monument authorities. Whole townscapes can be retained without having to surrender their own character and single facades can be decoratively and impressively redesigned in the genuine style.

With their natural brick look, Meldorfer® Flachverblender above all provide an excellent economical solution in the renovation of existing buildings. In addition there is the sustainable mineral product character. Not only that, in conjunction with thermal insulation composite systems you can save much energy and conserve resources – one aspect which benefits not only our environment.

Also the **Capatect-Ceratherm system** is a perfect partner for ETICS with a brick look. It is available in low flammability and non-combustible variants and with a ceramic finishing layer (brick veneers cut from whole bricks) it opens up a wide variety of possible designs. Meldorfer® flat facing bricks and the Capatect-Ceratherm system are produced within the DAW Group, a traditional family enterprise, which produces paints, enamels, glazes, plasters and products for building protection and thermal insulation. As Germany's largest manufacturer of building paints and since its foundation in 1895, DAW has been successfully developing product solutions, always with the decoration of buildings and their value retention as the objective.

On the following pages you will find two intelligent system solutions for brick facades – we hope you find them useful!

Dr. Klaus Murjahn
Executive Partner of DAW

Dr. Ralf Murjahn
Chairman of the DAW Managing Board



Table of contents

Meldorfer® flat facing bricks	06
Versatile, authentic, handcrafted	08
Mineral, robust, long-lasting	10
Easy energy-saving refurbishment	12
Combination facades	14
Architectural heritage	16
Educational establishments	18
Industrial buildings	20
Meldorfer® inside	24
Capatect-Ceratherm system	26
Distinctive, exclusive, natural	28
Multi-storey buildings	30

Meldorfer® flat facing bricks

„The flat facings, Meldorfer® Flachverblander, offer an excellent technical and economical solution in facade decorative design. In a brick look and natural stone.“





Versatile, authentic, handcrafted

Meldorfer® flat facing bricks

Meldorfer® flat facing bricks are an attractive visiting card for any facade. Handcrafted from high quality materials, they create a traditional brick-built appearance – and in conjunction with thermal insulation they bring the house to the state of the art in terms of energy saving.

In comparison to full bricks and brick slips Meldorfer® flat facings are also particularly characterised by economic efficiency. All system components are carefully matched to one another and offer the highest level of technical reliability.

Versatile

With their numerous application and decorative possibilities they are ideally suited to contemporary facade design, because they can be used anywhere a brick look is desired.

Here, it does not matter whether the project involves detached family houses, residential estates, industrial buildings or architectural heritage – visually appealing solutions can always be found. They are ideal for the retention of a whole milieu, but also for renovating single existing buildings too.

Authentic

Flat facings are almost indiscernible from conventionally fired bricks. Due to the large number of possible special colours and surfaces, any facade can be reconstructed true to the original – even with entire pointing. Practically any brick format is feasible and almost any colour can be faithfully reproduced. In this respect, special colours are available from an area of about 50 sq. m. Not only that – in interiors too, Meldorfer® flat facing bricks display a timelessly elegant, striking emphasis.

Handcrafted

The manufacture itself is a surety of quality, because Meldorfer® flat facing bricks have been hand-made at the manufacturing facility in Meldorf in Schleswig-Holstein for over 30 years. This demands a high level of experience and flair. The consistently high „Made in Germany“ quality is the result of high standards in development and production. In the production area the Meldorfer® flat facing bricks are first produced on special machines. The distinctive surface design and the corresponding finishing are however carried out manually as before by specialists.



A tradition of quality: Meldorfer® flat facing bricks are largely hand-made.

Mineral, reliable, long-lasting

Meldorfer® flat facing bricks

Meldorfer® flat facing bricks make a constructive contribution in the field of „environmentally friendly construction“ – and ensure lasting rugged qualities.

Mineral

Meldorfer® flat facing bricks show their mineral character in the high quality brick look.

Resilient

With their resilience to external influences Meldorfer® flat facing bricks set the benchmark. Wind, weather, temperature variations and mechanical effects due to residents or passers-by are offset by the robust facings.

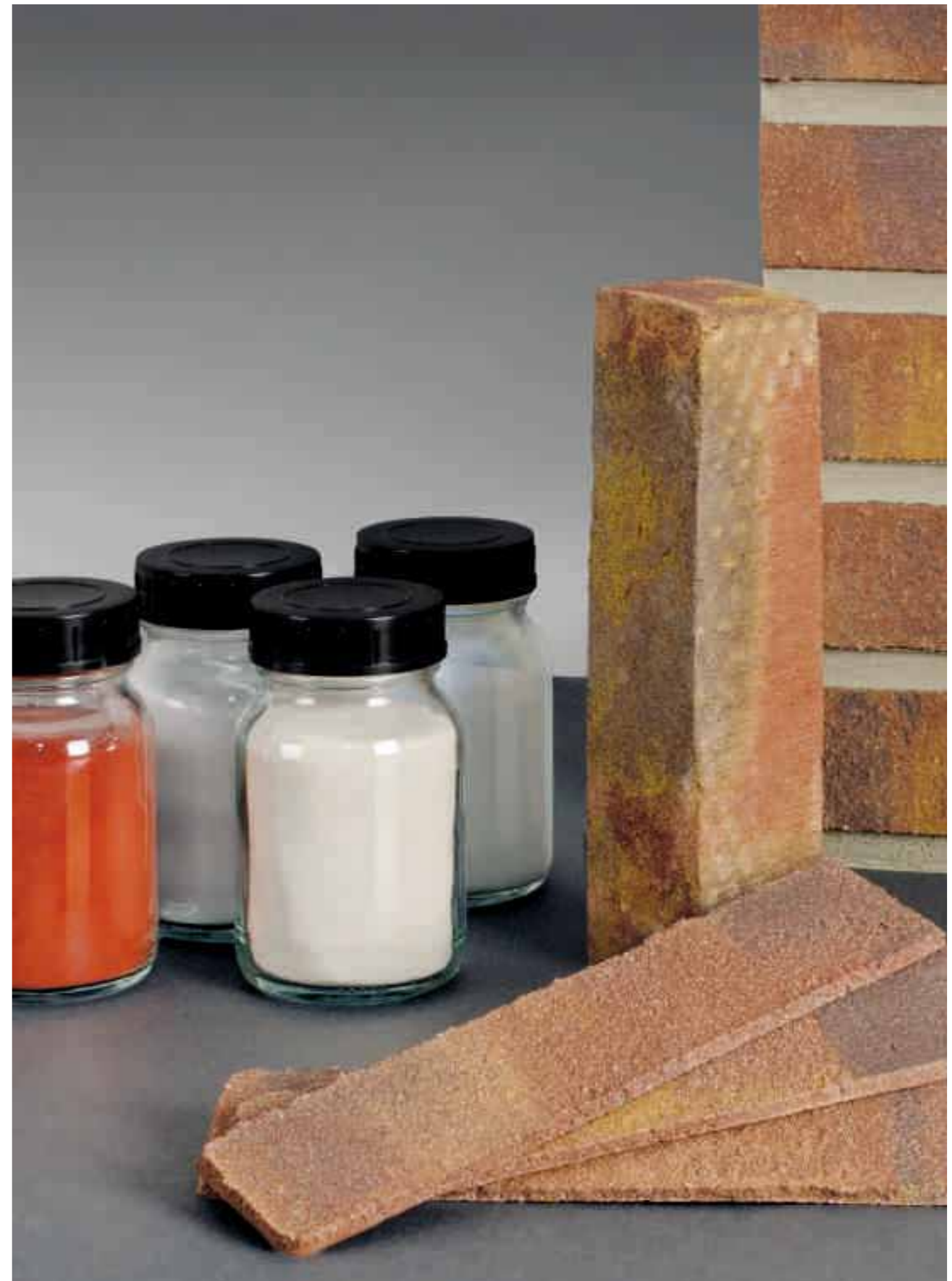
A plus which adds up, because painting work for renovation, which is usually needed after a few years depending on the quality of the coatings used, is not required.

Long-lasting

The longevity of Meldorfer® flat facing bricks has been proven by a large number of reference facades with ages of more than twenty years. These buildings have retained their natural visual appearance – and are still technically flawless even at critical points, for example, the pointing. The longevity of millions of square metres of already mounted flat facings has delighted building owners over decades.



Pure nature: Meldorfer® flat facing bricks are produced using high quality mineral materials.





Easy energy – saving refurbishment

Meldorfer® flat facing bricks

Saving energy – with continually increasing crude oil and gas prices, this is more important than ever. More than 75% of the energy consumed by a private household is used for heating energy.

So this means: save money, invest in the future and fulfil the legal requirements and climate protection targets of the prevailing energy-saving directive. With facade insulation and Meldorfer® flat facing bricks up to 40% of heating costs can be saved.

Flat facings only weigh 5 - 6 kg/m² and can be mounted directly onto reinforced insulation boards. This process does not significantly change the static structure of the building nor does it noticeably increase the wall thickness. Meldorfer® flat facing bricks therefore represent an extremely interesting alternative to conventional, heavy ETICS structures of rendered insulating material.

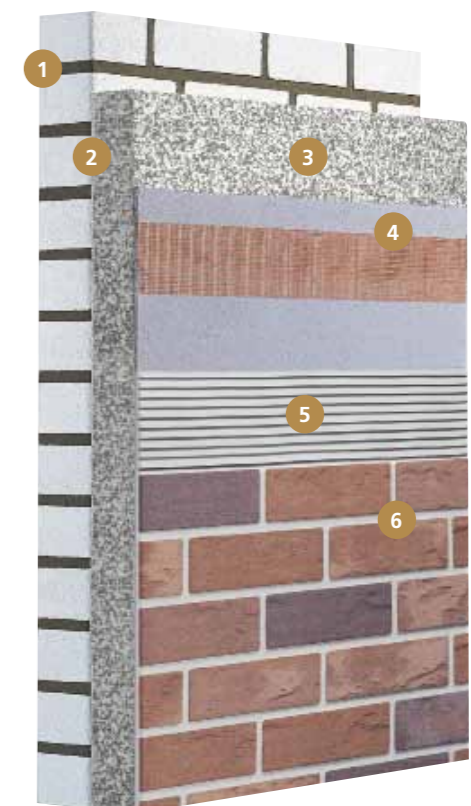
In particular, in regions where brick characterises the landscape, perfectly insulated facades with Meldorfer® flat facing bricks are always the first choice. Also, one aspect to consider with thermal insulation is that, irrespective of whether Meldorfer flat facings from the standard range or customised production are used, even quite avant garde designs can be obtained which also sustainably fulfil energy-saving targets.



Meldorfer® Flachverblender
Officially constructionally approved in the system by the German Institute for Building Technology (DIBt).

System structure of Meldorfer® ETICS

- 1 Wall structure, existing or new construction
- 2 Adhesive (mounting with plugs and/or strips may be necessary depending on the substrate quality and legal requirements)
- 3 Capatect-Dalmatiner-Fassadendämmplatte insulation board
- 4 Reinforcing layer
- 5 Meldorfer® Ansatzmörtel 080, bonding mortar
- 6 Meldorfer® Flachverblender, flat facings



Reduce costs – increase the appeal

Interesting accents can be achieved with partial coverings using Meldorfer® flat facing bricks. Particularly with larger buildings such as apartment blocks the facings can give the building its own, highly distinctive character. Within the flat facing area and with the variety in shape and colour of the Meldorfer system any design idea can in principle be implemented through to definitive samples.

Combination facades increase the appeal of a building – making the apartments even more coveted by tenants. In addition, partial cladding on larger buildings is an interesting economical alternative to full cladding, because the costs are lower. Through the commendable and effective thermal insulation in conjunction with ETICS, the heating costs can be reduced and pollutant emissions minimised. Upgrading in this way literally pays off two or three times over.

Property: Marienhöhe, Quickborn
Building owner: Adlerhorst Baugenossenschaft, Norderstedt
Colour: Special colour 1182/2



An attractive appearance

Due to the high contrast between the render and the brick look, numerous unusual facade details are created, which come together to give a distinctive overall impression. In this way, combination facades display a high level of individuality and appeal.





Architectural history maintained with character

The 100-hectare residential area of Dulsberg-Nord in the Hamburg suburb of Barmbek is a fine example of residential construction in the social reformation of the 1920s. 549 apartments, about 25,000 m² living area and 26,000 m² facade area: impressive figures for refurbishment with protection of the social background – a clear case for Meldorfer® flat facing bricks. Combined with an efficient thermal insulation composite system, Meldorfer® flat facing bricks are convincing, not only through modern energy efficiency and attractive, decorative masonry, but also through well-developed, technical solutions for detail such as protruding stretcher courses, corner bonds or steeply sloping window sills. The retention of the traditional facade visual effect underlines the constructional and architectural quality of the residential complex in the long term.

Property: Residential estate, Dulsberg-Nord, Hamburg
Building owner: SAGA GWG, Hamburg
Planning: ITW Dipl.-Ing. Zietz GmbH, Hamburg
Colour: Special colour 0757/4



Milieu protection

Perfectly refurbished Hamburg residential architecture of the 1920s (Fritz Schumacher Building): Meldorfer® flat facing bricks in the traditional red fair-faced masonry.



Impact resistant brick look on ETICS – a facade which sets the trend

Public buildings, such as for example school buildings or play schools, generally make higher demands on their facades, because here they are routinely subjected to high mechanical stresses.

With this primary school in Oyten a system structure was required which combined a brick visual appearance to suit the surroundings with an impact resistant thermal insulation composite system (ETICS). Here, the decision-makers settled on Meldorfer flat facings and „Edition Carbon“ thermal insulation from Caparol.

The brick look is perfectly retained by Meldorfer® flat facing bricks – any difference to full bricks cannot be detected. The selected colour „Hamburg“ is part of the Meldorfer standard range and has a good price/performance ratio.

The Meldorfer® flat facing bricks used were mounted on the „Edition Carbon“ ETICS system. This system combines extreme impact resistance and resilience even in the severely stressed plinth and entrance areas.

The extreme stress capability is achieved through the use of carbon. Carbon-fibre reinforced filler compounds exhibit excellent performance features even with a thin layer thickness.

An „Edition Carbon“ thermal insulation composite system withstands not only mechanical stresses, but also saves up to 50% of heating costs – year on year! Valuable resources in terms of sustainability and environmental friendliness are conserved – put in the limelight by the traditional, brick-look character.

They can take a lot

Shielded by carbon thermal insulation and Meldorfer® flat facing bricks, school buildings can take a lot of punishment in daily routine, even in the plinth areas.

Property: Primary school, Oyten
Building owner: Oyten community
Colour: Hamburg

System structure of Carbon ETICS

The wall structure with Meldorfer® flat facing bricks can be easily seen in cross section. The carbon reinforcement is extremely impact resistant and provides lasting protection over many years.





Futuristically traditional: brick on reinforced concrete

With the „Kraftwerk“ the Swiss architect, Roger Edelmann, has created an unusual and impressive landmark. The retro-futuristic building is located in the centre of the picturesque town of Wil and accommodates the only CO2-neutral fitness studio in Switzerland.

The facade cladding with a natural appearance was obtained with Meldorfer® flat facing bricks which were produced to the architect's requirements in a special production run – and which form a stimulating contrast to the striking Art Déco elements. Modern thermal insulation is provided under the facade by a Capatect Carbon insulation system from Caparol. Also the interior rooms were clad with Meldorfer® flat facing bricks which were adhesively mounted on reinforced concrete. According to the architect, Roger Edelmann, visitors cannot tell the difference from a brick wall even after touching and tapping it.

Property: Kraftwerk Wil, Schweiz
Building owner: Arson AG, Schweiz
Colour: Special colour 1865/2



A real play of light

The office and working areas are quite extraordinary. Along with the spacious and open room division, a further feature are the two-storey round arched windows which allow generous amounts of light to enter.



Old industrial building, new brick look

The WMF (Württembergische Metallwarenfabrik) in the Swabian town of Geislingen an der Steige is a successful symbiosis of old and new. Amidst brick-built production buildings dating from the end of the 19th century, the so-called „Fish Hall“ with its striking sawtooth-shaped roof now accommodates the WMF factory sales.

To reinforce the link between the production facilities and the factory sales for the facade of the „Fish Hall“ the usual plaster render finish was waived in favour of a matching brick appearance using Meldorfer® flat facing bricks. The classical brick look is impressive with living colour nuances – and there is an energy advantage. It was possible to bring the previous, inadequate insulation of the building to the latest state of the art using a thermal insulation composite system. The attractive, historical building structure is optimally protected and with a flair of its own invites the many visitors to a special buying spree.

Property: WMF, Geislingen an der Steige
Building owner: Oliver Mäck, Ulm
Colour: Brandenburg, F2



Brick appearance as a promise of quality

Factory sales of high quality products in the classical factory outlet. Clear geometrical shapes underline the industrial charm of the former fish hall.

Striking accents for the interior area

Versatile design with style – anyone seeking more individuality will find it in the Meldorfer® Exklusiv range. Meldorfer® Exklusiv offers a wide range of convincing, attractive design possibilities in interior areas – from northern coolness to more warmer, Mediterranean colours. This makes it ideal, for example, for foyers, reception areas, showrooms or demanding private rooms. Particularly in interior areas, the excellent appearance offers a refined and highly interesting alternative to textile wall coverings or plaster.

Through the low weight of approx. 5 kg/m² Meldorfer® Exklusiv can be applied even to lightweight walls. Different appealing colours and formats provide an attractive choice. Also subsequent costs remain low: The robustness and cleanability of the material significantly extend periods between maintenance. Furthermore, more costs are saved in the interior areas by the lower working effort compared to full bricks.

Attractive sustainability

In comparison to full bricks Meldorfer® Exklusiv are clearly the more attractive option.



A straight line in modernity

Also in interior areas Meldorfer® Exklusiv creates a very special atmosphere.



„Ceratherm fulfils the desire for a durably neat facade appearance in fired ceramics. Always individual and always in harmony with aesthetic criteria.“

Capatect-Ceratherm system





Distinctive, exclusive, natural

Capatect-Ceratherm System

With the Capatect-Ceratherm System a number of individual design possibilities open up with a natural building material. Classic ceramic or clay-based facings on thermal insulation produce an exclusive facade effect. Whether new construction or renovation, single-family house or a larger building: The Ceratherm System reliably satisfies all requirements with regard to aesthetics, economy and planning dependability.

Approved by building supervisory authorities

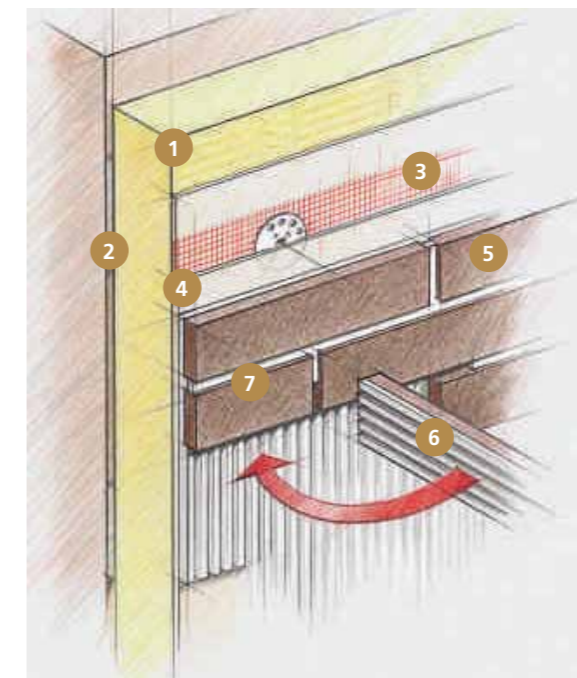
The basis of this sophisticated ETICS solution has been well proven of decades in other officially approved Capatect systems: Capatect-PS-Fassadendämmplatten (insulation boards) in rigid polystyrene foam in a low flammability version or Capatect-Fassadendämmplatten (insulation boards) in mineral wool for the non-combustible version.

The reinforcing layer is implemented in a standard layer thickness of approx. 4 mm with the well-proven Capatect ready-made mortars and the Capatect-Gewebe 650 fabric. Then, along with adhesive mounting, additional fixing of the system with approved disc-headed plugs always follows.

Ceramic coating

For a final covering of ceramics there are different products available. Whether it involves commercially available brick slips, ceramic or split tiles: there are many coverings which are approved for use on the Ceratherm System. Of course, partial coverings in conjunction with Capatect finishing renders can be obtained.

As always, valuable buildings are given long-term protection. It will be some time before the next renovation or refurbishment. Not only that: The exclusive appearance increases the value of the building.



An overview of the system structure

- 1 Facade insulation board
- 2 Adhesive compound
- 3 Reinforcing fabric
- 4 Reinforcing compound
- 5 Ceramic covering
- 6 Bedding mortar
- 7 Pointing

Thermal insulation with ceramic facings

The Capatect-Ceratherm System combines exclusive visual appearance with additional facade protection.

Brick facade becomes an eye-catcher

Within the scope of a refurbishment of approx. 5,000 m² of facade area, the Düsseldorf Building Society (DüBS) had three blocks of buildings with 80 residential units dating from the 1960s insulated to the latest level of the energy saving directive. A special concern here was to maintain the original architectonic character of the multi-storey building. With their cuboid architecture the residential blocks were to remain recognisable as typical buildings from the 1960s while offering modern comforts.

In order that the visual appeal of the facade is retained over decades, the Capatect insulation boards were not rendered, but instead clad with red split facings. The impressive result is a facade with extraordinary uniform joints and a subdued blazed colour appearance.

Property: Hellweg/Porschestraße, Düsseldorf
Building owner: Düsseldorfer Bau- und Spargenossenschaft (DüBS)
Colour: Red split tiles



Brick appearance from the 60s – now „as new“
 After conclusion of the facade modernisation, the three-winged building looks as though it has just been built. The facades were brought to the currently demanded level of EnEv with Capatect insulation boards and were clad with split facings.



Rückseite